

1

# Dolphin Court, Hove Street

**BH2021/02934**



**Brighton & Hove  
City Council**

# Application Description

---

- Erection of an additional storey to provide 2no. two-bedroom flats and 1no. one-bedroom flat (C3) including roof terraces, new lift plant and overrun.



Brighton & Hove  
City Council

# Map of application site



Brighton & Hove  
City Council

# Existing Location Plan



002-3-(PP)-LVLO



# Existing Block Plan

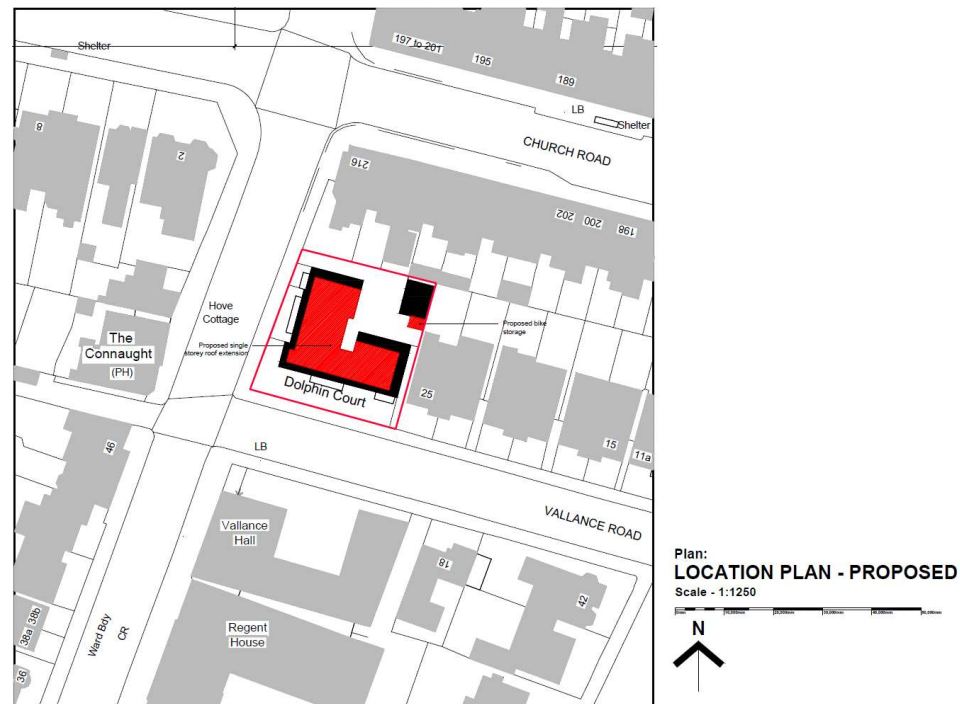


5

002-3-(PP)-LVLO



# Proposed Location Plan



002-3-LCT PLNS Rev D



# Proposed Block Plan



002-3-LCT PLNS Rev D



# Aerial photo of site

---



Brighton & Hove  
City Council



# 3D Aerial photo of site

---



Brighton & Hove  
City Council

# Street photos of site

---



# Street photos of site

---



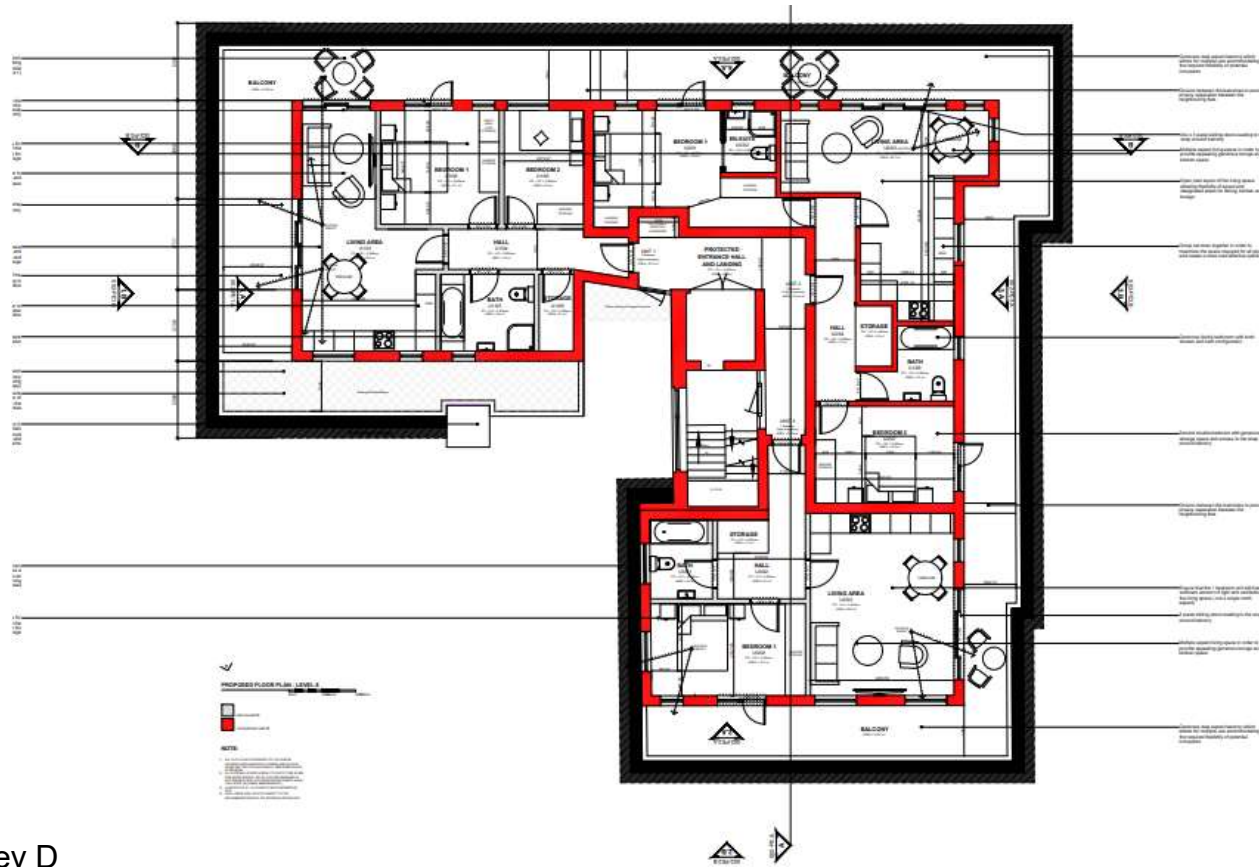
# Street photos of site

---



Brighton & Hove  
City Council

# Proposed Sixth Floor Plan

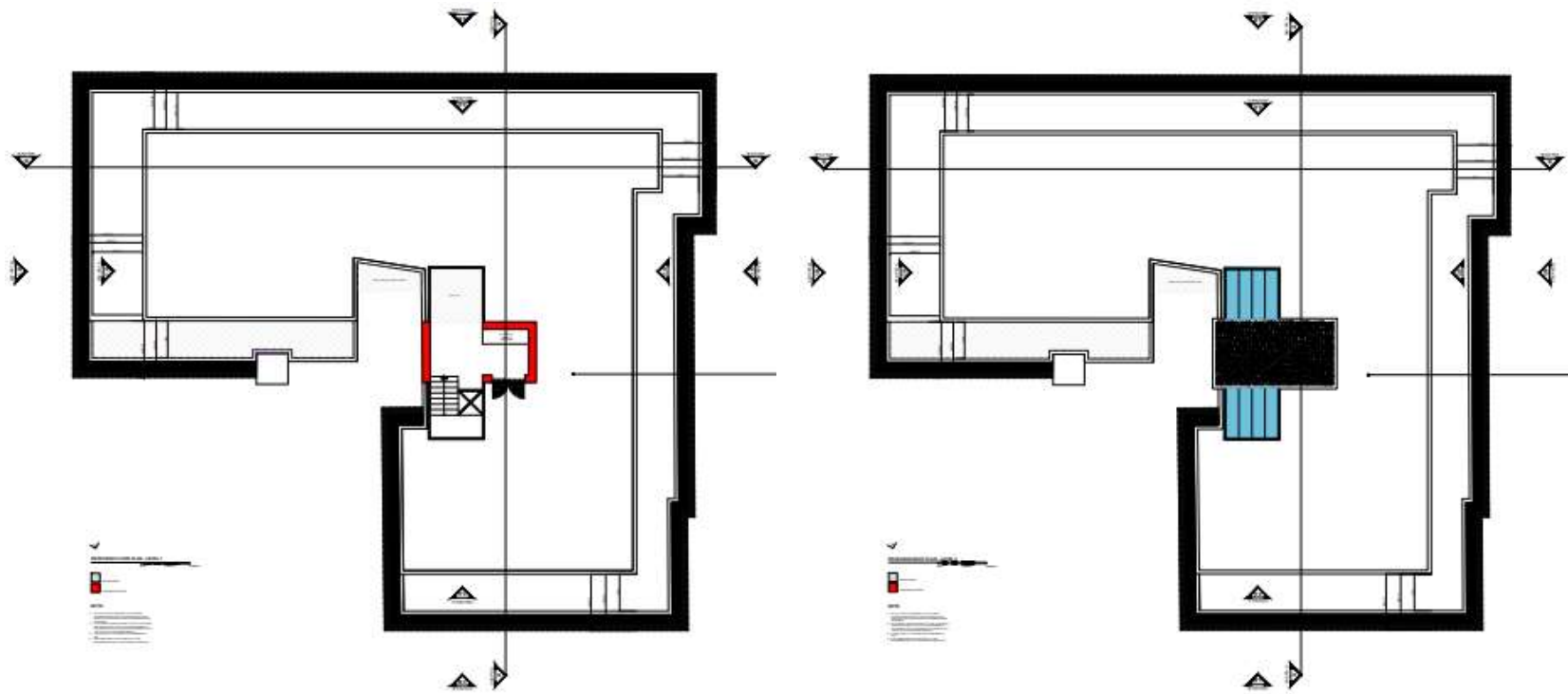


13

002-3-(PP)-LVL6 Rev D



# Proposed Seventh Floor & Roof Plans



14

002-3-(PP)-LVL7 Rev D and 002-3-(PP)-LVL8 Rev D



# Existing Front Elevation

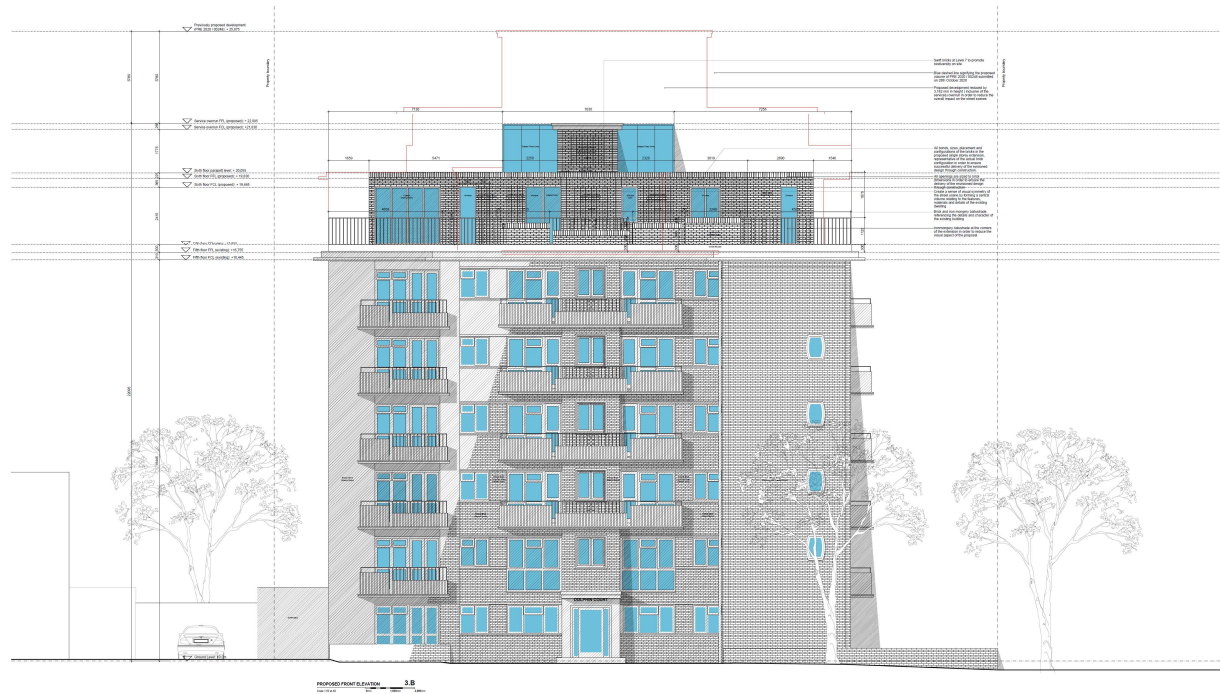


15

002-3-(EE)-3



# Proposed Front Elevation



16

002-3-(PE)-3.B





# Existing Rear Elevation



17

002-3-(EE)-2



# Proposed Rear Elevation



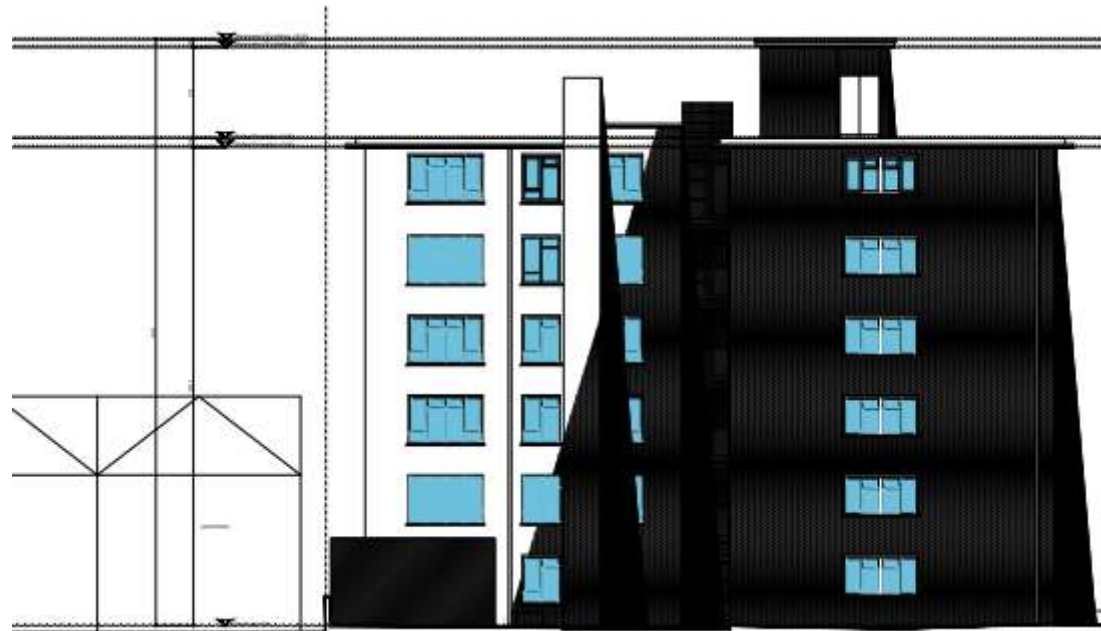
18

002-3-(PE)-1.B Rev D



# Existing North Side Elevation

---

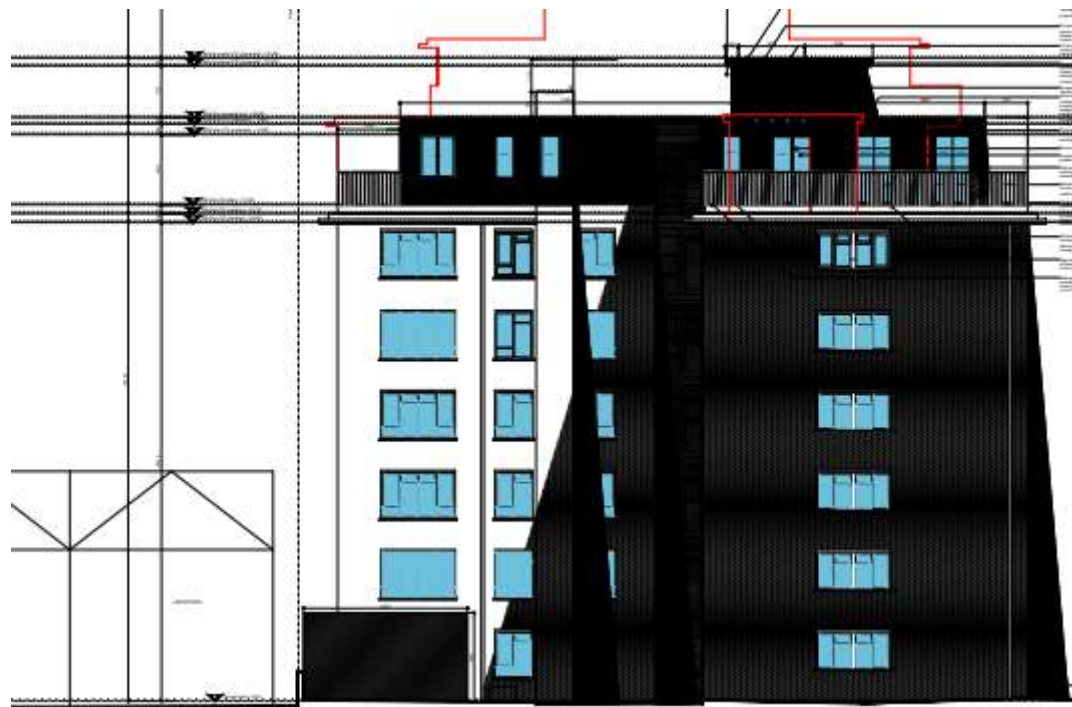


19

002-3-(EE)-1



# Proposed North Side Elevation



20

002-3-(EE)-1



# Existing South Side Elevation

---



21

002-3-(EE)-4



# Proposed South Side Elevation



22

002-3-(PE)-4.B



# Proposed Site Section

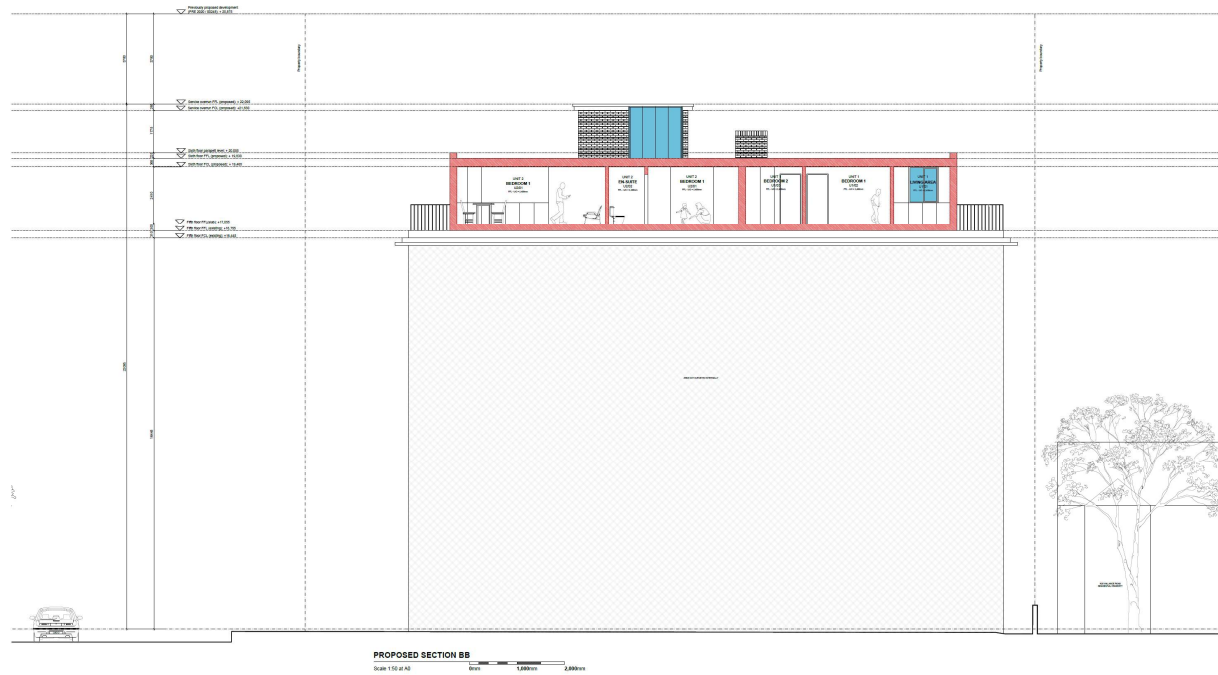


23

002-3-(PS)-AA Rev D



# Proposed Site Section



24

002-3-(PS)-BB Rev D





# Proposed Visual - South Elevation

---



002-3-VIEW 1&2 Rev D



Brighton & Hove  
City Council

# Proposed Visual - Front Elevation

---



002-3-VIEW 5&6 Rev D



Brighton & Hove  
City Council

# Proposed Visual - Looking South East



002-3-VIEW 3&4 Rev D



# Proposed Visual - Looking South

---



28

002-3-VIEW 5&6 Rev D



# Proposed Visual - Looking West

---



002-3-VIEW 1&2 Rev D



Brighton & Hove  
City Council

# Proposed Aerial Visual - South

---



30

002-3-VIEW 3&4 Rev D



# Proposed Aerial Visual - North

---



002-3-VIEW 7&8 Rev D



# Proposed Top Floor Visual - South West



32

002-3-VIEW 9&10 Rev D





# Proposed Top Floor Visual - South East



002-3-VIEW 9&10 Rev D



Brighton & Hove  
City Council

# Key Considerations in the Application

- Principle of development
- Design and Heritage
- Biodiversity
- Impact on Neighbouring Amenity, including fire safety
- Impact on Highways
- Standard of Accommodation
- Sustainability



Brighton & Hove  
City Council

# Conclusion and Planning Balance

---

- Provision of three new dwellings in existing building – significant benefit in time of housing need;
- Sustainability and biodiversity net gains;
- High quality design of the additional storey;
- No adverse impact on heritage assets, neighbouring amenity or on highways safety;
- Good standard of accommodation provided.

Recommendation: **Approve**

